

SOLAR THERMAL

BURAL
SOLAR

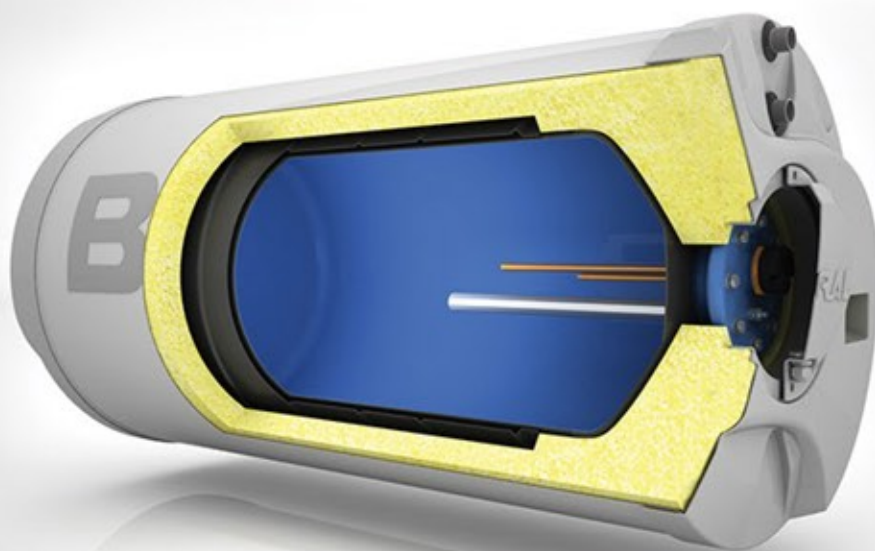


THERMOSIPHON SOLAR WATER HEATERS



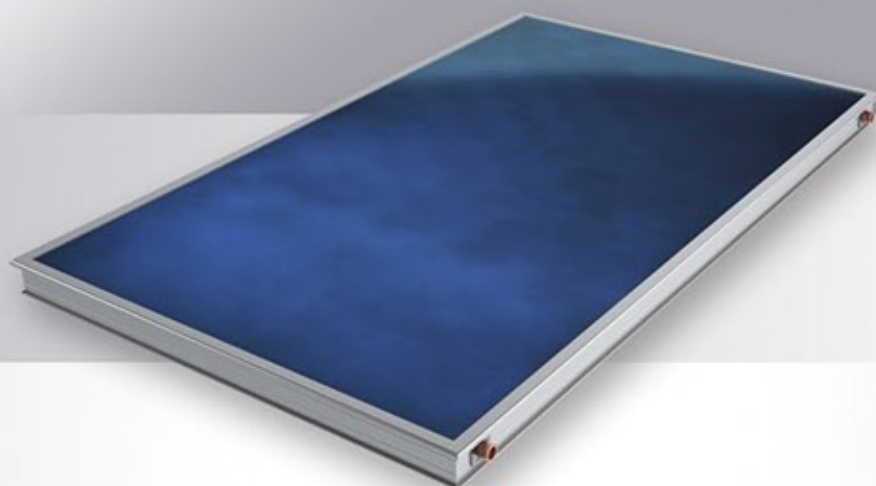
KD SERIES	KD160	KD200	KD300
Tank dimensions	Ø600x1057 mm	Ø600x1257 mm	Ø600x1857 mm
Tank weight	67 kg	78 kg	118 kg
Tank Insulation	Polyurethane		
Solar collector Area (*)	1,76 m ² / 2,31 m ²	2,31 m ²	3,52 m ² / 4,62 m ²
Solar Collector Weight	26 kg / 36 kg	36 kg	52 kg / 72 kg
Solar Collector Insulation	rock wool		
Mounting options	Flat roof, pitched roof		

* Number and type of solar collectors varies according to the climatic conditions of the place where it is located.



* Sizes and specifications are subject to change without prior notice

SOLAR COLLECTORS



HP SERIES	HP180	HP230	HP270
Gross area	1,76 m ²	2,31 m ²	2,66 m ²
Dimensions	1916 x 916 mm	1961 x 1176 mm	2261 x 1176 mm
Weight	26 kg	36 kg	40 kg
Transparent cover	Tempered Solar Glass		
Absorber	High selective Al		
Absorption α sol - Emission ϵ 100°C	95% - 5%		
Welding type	Laser		
Tubes	Copper		
Insulation	rock wool		
Backsheet	Aluminium		
Mounting options	Flat roof, pitched roof		



ST SERIES	ST180	ST230	ST270
Gross area	1,76 m ²	2,31 m ²	2,66 m ²
Dimensions	1916 x 916 mm	1961 x 1176 mm	2261 x 1176 mm
Weight	26 kg	36 kg	40 kg
Transparent cover	Tempered Solar Glass		
Absorber	Black selective Al		
Absorption α sol - Emission ϵ 100°C	90% - 20%		
Welding type	Laser		
Tubes	Copper		
Insulation	rock wool		
Backsheet	Aluminium		
Mounting options	Flat roof, pitched roof		

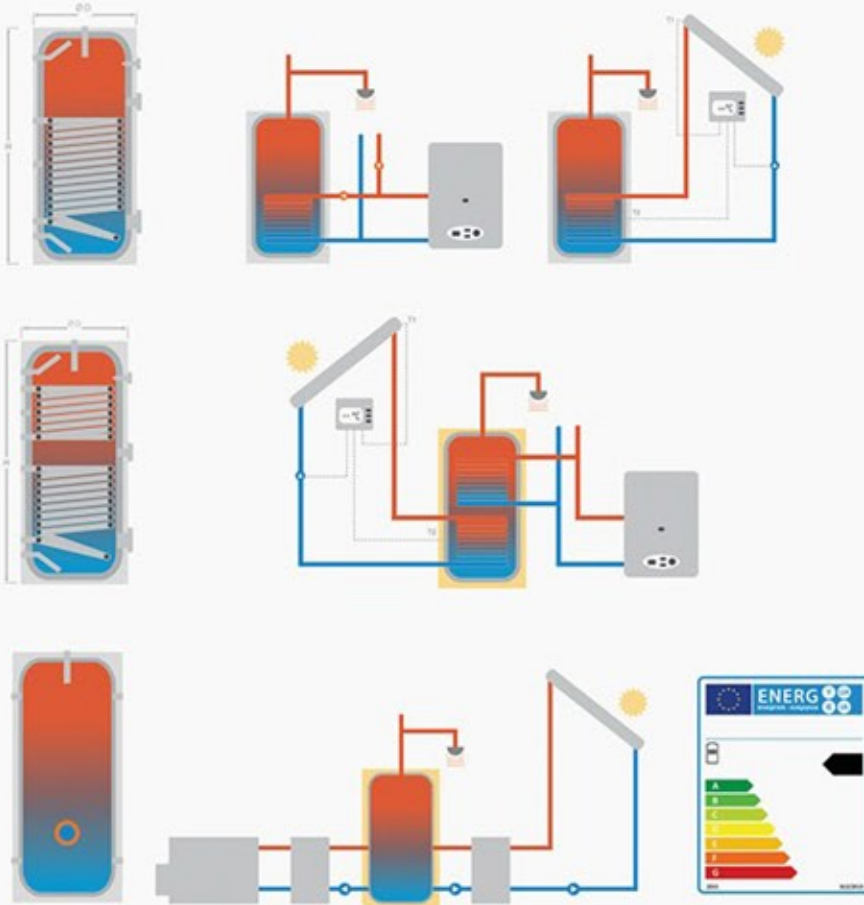
* Dimensions and specifications are subject to change without prior notice.



Bundesamt
für Wirtschaft und
Ausfuhrkontrolle



DOMESTIC HOT WATER TANKS



BS SERIES	BS100	BS160	BS200	BS300	BS500	BS800	BS1000	BS1500	BS2000	BS2500	BS3000
External diameter (mm)	488	590	590	700	750	900	1000	1118	1258	1458	1458
Height (mm)	1078	1124	1318	1208	1800	2100	2070	2300	2228	2200	2558
Heat exchanger inlet-outlet	1" "	1 1/4" "	1 1/4" "	1 1/4" "	1 1/4" "	1 1/4" "	1 1/4" "	1 1/4" "	1 1/4" "	1 1/4" "	1 1/4" "
DHW inlet-outlet	3/4" "	3/4" "	3/4" "	1" "	1" "	1 1/4" "	1 1/4" "	1 1/4" "	1 1/4" "	1 1/4" "	1 1/4" "
Circulation	3/4" "	3/4" "	3/4" "	1" "	1" "	1 1/4" "	1 1/4" "	1 1/4" "	1 1/4" "	1 1/4" "	1 1/4" "
Electrical heater connection	1 1/2" "	1 1/2" "	1 1/2" "	1 1/2" "	1 1/2" "	2" "	2" "	2" "	2" "	2" "	2" "
Empty weight (kg)	70	90	110	120	190	260	280	378	592	720	840
Insulation type - thickness	Polyurethane - 50 mm						Soft PU - 80 mm				
Outer cover material	Painted steel						Vinylex				

BD SERIES	BD160	BD200	BD300	BD500	BD800	BD1000	BD1500	BD2000	BD2500	BD3000
External diameter (mm)	590	590	700	750	900	1000	1118	1258	1458	1458
Height (mm)	1124	1318	1208	1800	2100	2070	2300	2228	2200	2558
Heat exchanger inlet-outlet	1 1/4" "	1 1/4" "	1 1/4" "	1 1/4" "	1 1/4" "	1 1/4" "	1 1/4" "	1 1/4" "	1 1/4" "	1 1/4" "
DHW inlet-outlet	3/4" "	3/4" "	1" "	1" "	1 1/4" "	1 1/4" "	1 1/4" "	1 1/4" "	1 1/4" "	1 1/4" "
Circulation	3/4" "	3/4" "	1" "	1" "	1 1/4" "	1 1/4" "	1 1/4" "	1 1/4" "	1 1/4" "	1 1/4" "
Electrical heater connection	1 1/2" "	1 1/2" "	1 1/2" "	1 1/2" "	2" "	2" "	2" "	2" "	2" "	2" "
Empty weight (kg)	94	112	130	220	288	316	416	638	810	924
Insulation type - thickness	Polyurethane - 50 mm					Soft PU - 80 mm				
Outer cover material	Painted steel					Vinylex				

BA SERIES	BA100	BA160	BA200	BA300	BA500	BA800	BA1000	BA1500	BA2000	BA2500	BA3000
External diameter (mm)	488	590	590	700	750	900	1000	1118	1258	1458	1458
Height (mm)	1078	1124	1318	1208	1800	2100	2070	2300	2228	2200	2538
DHW inlet-outlet	1" "	1 1/4" "	1 1/4" "	1 1/4" "	1 1/4" "	1 1/4" "	1 1/4" "	1 1/4" "	1 1/4" "	2" "	2" "
Electrical heater connection	1 1/2" "	1 1/2" "	1 1/2" "	1 1/2" "	1 1/2" "	2" "	2" "	2" "	2" "	2" "	2" "
Empty weight (kg)	54	70	78	95	152	222	234	329	468	558	618
Insulation type - thickness	Polyurethane - 50 mm						Soft PU - 80 mm				
Outer cover material	Painted steel						Vinylex				

* Dimensions and specifications are subject to change without prior notice.



Address: Serbest Bölge 12. Cad. No: 24 38070 KAYSERİ / TURKEY

+90 352 225 71 01 info@bural.com.tr

www.bural.com.tr © 2020, BURAL LTD.ŞTİ. All rights reserved.